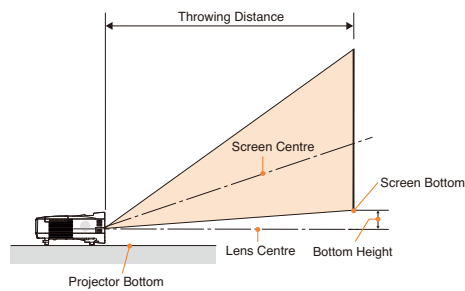


■ Specifications

| | | NP600S | NP500WS |
|--|--|---|---|
| LCD Panel | | 0.63 inch LCD with Micro Lens Array (Aspect Ratio 4:3) | 0.59 inch LCD with Micro Lens Array (Aspect Ratio 16:10) |
| Resolution*1 | | 1024 x 768 pixels | 1280 x 800 pixels |
| Lens | | Fixed Zoom / Manual Focus | Digital zoom ratio 1.2 Throw ratio 0.74, F2.3, f=9.7mm |
| Projection Distance | | | 0.9m to 1.7m |
| Projection Angle | | | 29.1 to 29.4 deg |
| Lamp (Eco Mode) | | | 230W AC (170W) |
| Lamp Life*2 (Eco Mode) | | | 3000H (4000H) |
| Light Output*3*4 | | 2600 ANSI lumens (Approx. 70% in ECO Mode) | 2100 ANSI lumens (Approx. 70% in ECO Mode) |
| Contrast Ratio (Full White/Full Black)*4 | | | 600:1 |
| Quietness (Eco Mode) | | | 35dB (29dB) |
| Image Size | | 60 to 110 inch | 57 to 104 inch |
| Maximum Resolution | | UXGA (1600x1200) with Advanced AccuBlend | |
| Scan Rate | | 15kHz to 100kHz (RGB:24kHz or over) | |
| Video Bandwidth | | 50Hz to 120Hz | |
| Colour Reproduction | | RGB : 80MHz (Max) 16.7 million colours simultaneously, Full colour | |
| Input Terminals | Computer1 Input | D-Sub Mini 15pin | Compatible signals*5 RGB (Analog) H/V Sync Composite Sync Sync on G Stereo L/R |
| | | Stereo Mini | 0.7Vp-p / 75Ω 4.0Vp-p / TTL Level 4.0Vp-p / TTL Level 1.0Vp-p / 75Ω(with Sync) Negative 0.5Vrms / 22kΩ or over |
| | Computer2 (DVI-I) Input | DVI-I 29pin | Compatible signals*5 DVI (Digital/Analog) |
| | | Stereo Mini | VGA / SVGA / XGA / WXGA / WXGA+ / SXGA / SXGA+ / UXGA / 480i / 480p / 576i / 576p / 720p / 1080i (Analog) VGA, SVGA, XGA, WXGA, SXGA (Digital) HDCP supported*6 0.5Vrms / 22kΩ or over |
| | Component Input (Sharing with Computer1) | D-Sub Mini 15pin (Sharing with Computer1) | Compatible signals DTV : 480i, 480p, 720p, 1080i (60Hz) / 576i, 576p, 1080i (50Hz) DVD : Progressive (50 / 60Hz) |
| | | Audio input is sharing with computer1 | Same with computer1 |
| | S-Video Input | Mini DIN-4pin | Y Cb,Cr (Pb,Pr) |
| | | RCA pin x 2 | Stereo L (MONO)/R Composite Video |
| | Video Input | RCA pin | Composite Video |
| | | Audio input is sharing with S-Video | Same with S-Video |
| RGB Output | D-Sub Mini 15pin | Only Computer 1 In can be output | |
| Audio Output | Stereo Mini | Stereo L/R | |
| Control | Wired LAN Port | RJ-45 | |
| Control | PC Control | D-sub 9pin | |
| Built-in Speaker | | 7W Monaural | |
| Keystone Correction | | Vertical Auto/Manual Approx. ±Max 20 degrees | |
| Environment | | Operational Temperatures Storage Temperatures | |
| Power Requirement | | 5°C to 40°C (Eco Mode selected automatically at 35°C to 40°C), 20% to 80% Humidity (Non-Condensing) -10°C to 50°C, 20% to 80% Humidity (Non-Condensing) | |
| Input Current | | 100 to 240V AC, 50Hz / 60Hz (NP600SG / NP600S+ : 200 to 240V AC, 50Hz / 60Hz) 3.8-1.5A (NP600SG / NP600S+ : 1.8A) | 100 to 240V AC, 50Hz / 60Hz (NP500WSG : 200 to 240V AC, 50Hz / 60Hz) 3.8-1.5A (NP500WSG : 1.8A) |
| Power Consumption | | Normal Mode Eco Mode Standby Mode (Power-saving Mode) | 325W 240W 11W (3W) |
| Regulations | | UL / C-UL Approved (UL 60950-1, CSA 60950-1) Meets DOC Canada Class B requirements Meets FCC Class B requirements Meets AS / NZS CISPR.22 Class B Meets EMC Directive (EN55022, EN55024, EN61000-3-2, EN61000-3-3) Meets Low Voltage Directive (EN60950-1, TÜV GS Approved) 308mm x 136mm x 301mm (Not including Protrusions) | |
| Dimensions (WxHxD) | | 308mm x 136mm x 301mm (Not including Protrusions) | |
| Weight | | 3.3kg | |

*1 : Effective pixels are more than 99.99%.
 *2 : Lamp life is defined as the average time span for the brightness of the lamp to be reduced by half, it does not refer to the warranty period for the lamp.
 *3 : This is the light output value (ANSI lumens) when the [PRESET] mode is set to [HIGH-BRIGHT]. If any other mode is selected as the [PRESET] mode, the light output value may drop slightly.
 *4 : Compliance with ISO21118-2005
 *5 : An image with higher or lower resolution than the projector's native resolution (NP600S:1024x768 / NP500WS:1280x800) will be displayed with Advanced AccuBlend.
 *6 : What is HDCP/HDCP technology?
 HDCP is an acronym for High-bandwidth Digital Content Protection. High bandwidth Digital Content Protection (HDCP) is a system for preventing illegal copying of video data sent over a Digital Visual Interface (DVI). If you are unable to view material via the DVI input, this does not necessarily mean the projector is not functioning properly. With the implementation of HDCP, there may be cases in which certain content is protected with HDCP and might not be displayed due to the decision/intention of the HDCP community (Digital Content Protection, LLC).
 All specifications are subject to change without notice.

■ Throwing Distance and Image Size



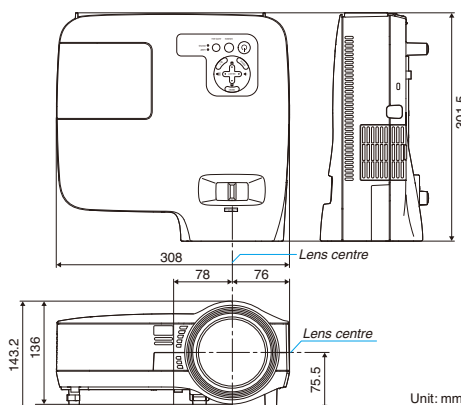
| Screen Size (inch) | Throwing distance(m) | Bottom Height(cm) |
|--------------------|----------------------|-------------------|
| 60 (1.22x0.91m) | 0.90 | 4.8 |
| 64 (1.30x0.97m) | 0.96 | 5.1 |
| 70 (1.42x1.06m) | 1.05 | 5.6 |
| 77 (1.57x1.17m) | 1.16 | 6.1 |
| 80 (1.63x1.22m) | 1.20 | 6.4 |
| 90 (1.83x1.37m) | 1.36 | 7.1 |
| 100 (2.03x1.52m) | 1.51 | 7.9 |
| 110 (2.23x1.67m) | 1.67 | 8.7 |

The values in the tables are design values and may vary.

| Screen Size (inch) | Throwing distance(m) | Bottom Height(cm) |
|--------------------|----------------------|-------------------|
| 57 (1.23x0.76m) | 0.90 | 12.5 |
| 60 (1.29x0.81m) | 0.95 | 13.1 |
| 70 (1.51x0.94m) | 1.11 | 15.3 |
| 80 (1.72x1.08m) | 1.28 | 17.5 |
| 87 (1.87x1.17m) | 1.39 | 19.0 |
| 90 (1.94x1.21m) | 1.44 | 19.7 |
| 100 (2.15x1.35m) | 1.60 | 21.9 |
| 104 (2.24x1.40m) | 1.67 | 22.8 |

The values in the tables are design values and may vary.

■ Dimensions



■ Remote Control



■ Options



WLPJ-0903-161RR

for more information
www.nec-display.com/ap/

Ultra Short Focal Projector

NP600S/NP500WS

Very short distance projection materialized with the ultra short focus lens
 High-brightness, multifunction projector optimum for business and educational uses
 NP500WS has a wide panel for the wide-screen WXGA format (1280 x 800)



- Ultra short focus projection
- High Brightness of 2600 ANSI lumens (NP600S)
- WXGA panel for wide-format images (1280 x 800) (NP500WS)
- Auto power on
- Quick start & Direct Power Off
- Auto Vertical Keystone Correction
- Virtual Remote Function
- Built-in 7W speaker



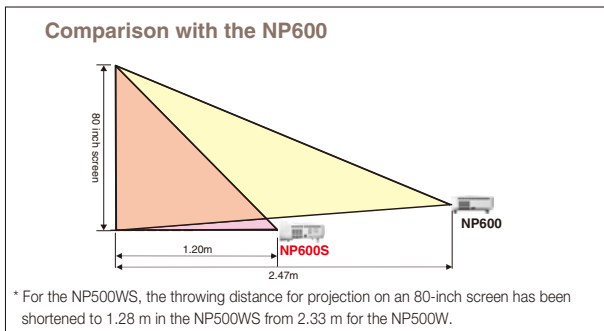
NP600S | NP500WS

XGA | 2600 ANSI lumens | 3.3 Kg | **WXGA** | 2100 ANSI lumens | 3.3 Kg



Ultra short focus projection

The fixed short-focus lens enables ultra short distance projection. For an 80-inch screen, it is possible to project from a distance of 1.20 m for the NP600S and 1.28 m for the NP500WS respectively, so that the projector can be set on a desk in the classroom or used in a meeting corner.



WXGA panel for wide-format images (NP500WS)

The projector's WXGA panel (1280 x 800) displays the same wide-format WXGA resolution images such as laptop computers and DVDs.

Multiple input/output terminals

Multiple input/output terminals include analogue RGB, DVI-I(digital), Video, and S-Video. By using the DVI-RGB adapter, analogue RGB signals can be connected from two computers.



Wired LAN Connectivity

Connect a LAN cable to the LAN port (RJ-45) on the projector to control the projector from a remote PC via the network; for instance, use the PC to turn the power to the projector on and off or switch input signals.

* It is necessary to install the PC Control Utility Pro control software on your PC separately. From May 2009, the PC Control Utility Pro can be downloaded from <http://www.nec-display.com/dl/en/>.

Auto power on (AC / Computer Input)

By inserting the power cord into an outlet, projection will start immediately without pressing the power button. If the Default Source is set to Auto, simply by turning on the power, the projector automatically finds the input signal and projects the images. When the projector is in Standby mode, applying a computer signal from a computer connected to the COMPUTER1 IN input will power on the projector and simultaneously project the computer's image. This functionality eliminates the need to always use the POWER button on the remote control or the projector cabinet to power on the projector.

Quick start & Direct Power Off

Your projector is setup and ready to display your presentation after 8 seconds from powering on, with NEC's Quick Start function. And for a speedy shut down, projector can be turned off using a power strip equipped with a switch and a breaker without powering down the projector, with the Direct Power Off function.

Auto Vertical Keystone Correction

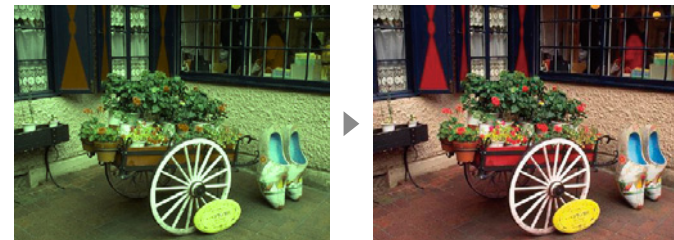
The projector will automatically detect and correct vertical inclination and trapezoidal distortions. The angle is adjustable vertically within a range of about +/-20 degrees from the projected angle.



Wall Colour Correction for vivid images even without a screen

Without a screen, projected images are affected because of the colour of the wall or blackboard you are projecting on to. The built-in colour correction for projecting images on a coloured wall or blackboard in this projector means that the colour tones of the projected image is approximate to those that are projected on to a white screen. The following nine colour options are available : whiteboard, blackboard, blackboard (grey), light yellow, light green, light blue, sky blue, light rose, and pink.

* Selecting [WHITEBOARD] reduces lamp brightness.



Variable Enlargement Function of the projected image

The function is capable of enlarging any section that you want to emphasize, such as a detailed table or graph up to a maximum of 4 times (16 times the area).

Very quiet operation in Eco Mode

Eco Mode operation drops projector noise to 29 dB for very quiet operation and extends the lamp replacement period up to a maximum of 4000 hours. In this mode, total cost of ownership can be effectively reduced. The projector can be put in to Eco Mode very easily with press of a button on the remote control.



Employing the newly developed Panel Crashed Air Cooling Technology contributes to the ecology as well

By blowing air from two different directions into the several-millimetre gap between the optical components and striking near the centre of the heat-generating components, the airflow is disturbed and blown directly onto the optical components. Compared to the ordinary cooling system that blows air from a single direction, the cooling efficiency is improved.

This technology suppresses the temperature increase of the optical components by around 10% to 20%, which in turn reduces the number of rotations of the cooling fan required to maintain the appropriate cooling performance and also reduces power consumption and noise emission.

Closed Caption

If the closed caption signals are included in the Video signal or the S-Video signal, the audio data can be displayed on the screen as captions.

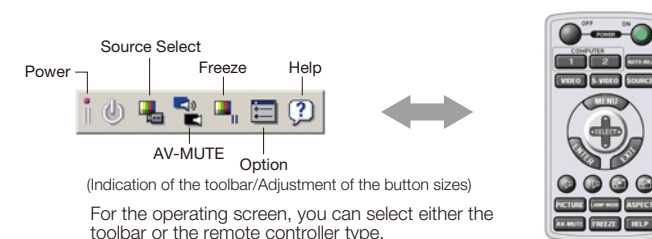
Virtual Remote Function

Download the Virtual Remote Tool utility software to operate the power on/off or switch inputs on the projector from your PC by using the supplied VGA signal cable.

When connected to a PC, the projector can be controlled without using the remote controller or operating the buttons on the main unit of the projector, so that you can efficiently and effortlessly proceed with meetings or classes.

Check with our website. (<http://www.nec-display.com/dl/en/>)

* The Virtual Remote Tool can be downloaded from May, 2009.
* Use the PC Control Utility Pro to execute the same operation via the LAN.
* Depending on the specifications of the connected computer and the versions of the graphics adapter and driver, the function may not operate properly.



The projector supports the optional NP02RC remote controller to register the control ID.

The respective projectors can be operated individually with the optional remote controller (NP02RC) by setting the individual control ID numbers to the respective projectors. If multiple projectors are used in the same room, the respective projectors can be operated individually by switching the ID. It is also possible to operate multiple projectors collectively by setting the same ID for all of them.

Built-in 7W speaker for integrated audio solutions

4.5m Power Cable

